



Animal Cremation Series

Model G-50

Specifically Designed For :

- Humane Societies
- Animal Control Facilities
- Private Pet Cremation Services
- Veterinary Practices

Capacity

G-50

5,000 lbs Batch Load Capacity

Easy To Load --- Easy To Operate

27" Load Height

85" Diameter Load Opening

No Visible Emission - No Odors

Meets State And Federal Regulations

No Grease Leakage

Built In Liquid Retention Dam

Built For Long Life

Constructed Of 3/16" Plate Steel, Lined With 1" 1,900 Insulation And 3" Heavy Duty Refractory

Pre- piped & Pre-wired And Assembled At Factory

(Stack Sections Installed On Site)

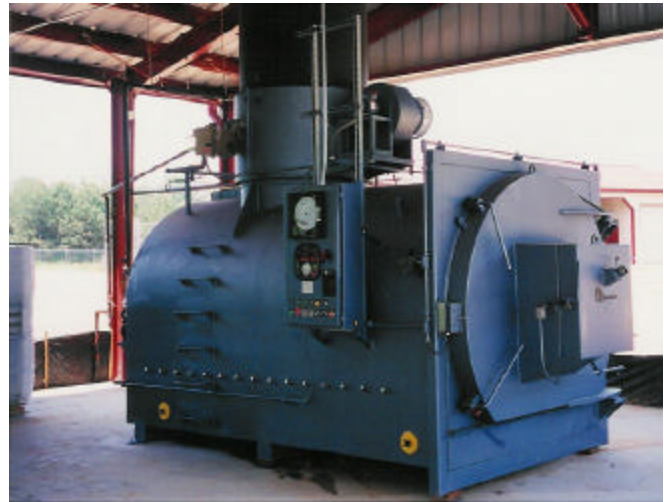
Automatic Temperature Control For Maximum Efficiency

Fuel Saving Feature Of High - Low Control for Secondary Burner

On - Off Control for Primary Burner

Fuel Saving Preheated Air For Primary & Secondary Chambers

Timer Controls For Burn Cycle



G-50 Shown with Optional Auxiliary Load Door

CONSTRUCTION	G-50-P
Dimensions: W x L x H	108" x 205" x 343"
Primary Chamber Volume	340 Cu. Ft.
Stack Sections, 48" x 6' Flanged	Total 24'
(12 Gauge With 3" 2,300°F Refractory Lining)	
Load Door Lined With Hi-Temp Composite	4"
Ash Removal Door Opening	85" Diameter
Primary Burner Firing Rate	3,500,000 BTU Avg.
Secondary Burner Firing Rate	2,400,000 BTU Avg.
Control Panel, NEMA 12, U.L. #508A	Included
Natural Gas Requirements	5,900 CFH
Electrical Requirements	220/60/3 50AMP
Paint & Primer, Hi-Temp	800°F To 1,200°F
Weight	46,142 Pounds

Distributed by:

Bestech Environmental Resources, Inc.
 1016 Ronda Lane
 Birmingham, Al. 35214
 Phone: (205) 791-3656 Fax: (205) 791-6745
 www.bestechinc.com – info@bestechinc.com

CONSTRUCTION	G-50-P
Dimensions: W x L x H	108" x 205" x 343"
Primary Chamber Volume	340 Cu. Ft.
Stack Sections, 48" x 6' Flanged	Total 24'
(12 Gauge With 3" 2,300°F Refractory Lining)	
Load Door Lined With Hi-Temp Composite	4"
Ash Removal Door Opening	85" Diameter
Primary Burner Firing Rate	3,500,000 BTU Avg.
Secondary Burner Firing Rate	2,400,000 BTU Avg.
Control Panel, NEMA 12, U.L. #508A	Included
Natural Gas Requirements	5,900 CFH
Electrical Requirements	220/60/3 50AMP
Paint & Primer, Hi-Temp	800°F To 1,200°F
Weight	46,142 Pounds